

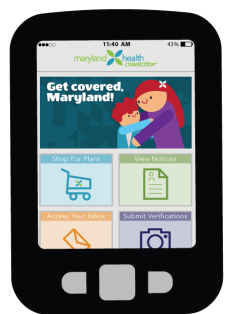
## Free, in-person help



Thousands of trained staff are available throughout Maryland to help you apply and enroll

Find free, in-person help near you

- + Search for an authorized insurance broker
- + Find your local consumer assistance organization or navigator
- + Look for a Certified Application Counselor
- + Visit your local health department or department of social services



Other ways to get help

**Download our free mobile app**, Enroll MHC, from the Apple Store (iPhone) or the Google Play Store (Android) to apply from your phone.



**Call us toll-free at 1-855-642-8572 (TTY: 1-855-642-8573)**

Our consumer support center offers assistance in more than 200 languages, as well as TTY services for the deaf and hard of hearing.

**Hours:** Mondays to Fridays 8am - 6pm, Saturdays 8am - 4pm



Have these items ready

If you are applying in person, be sure to bring the following items with you:

- Photo identification**

- ✓ **Birth dates** for each household member applying for coverage
- ✓ **Social Security numbers** or document numbers for each household member applying for coverage, if they have an SSN or other document number ^
- ✓ **Employer and income information** for everyone in your household (including pay stubs, W-2 forms or tax forms)
- ✓ **Citizenship or immigration information** for anyone applying for coverage
- ✓ **Information about any job-related health insurance** available to your household

[View Application Checklist \(PDF\)](#)

[Download Adobe Reader](#)